

Proposal for the Jobs Scope of

Your workflow in Busy for

GALAXY INDUSTRIES PVT LTD

Submitted by:

A K Softwares And Services

Dated: 08 November 2014

Application Overview

We will develop an Add-on of Busy. This Add-On will be integrated with your website Busy Software. It will be a window based Application and will be run on **Microsoft Windows Operating System**. It supports working in Multi user environment through LAN. This Software provides an Administrator login and any number of users login based on license purchased by you.

Purpose of Document

The purpose of this document is to layout the initial requirements for building the product. This document also provides a general overview of the product, the target audience of the product and general features about the document.

Project Summary

Name of project	ES-1415029
Name of company	GALAXY INDUSTRIES PVT LTD
Purpose (i.e. aim of project/activity and/or reasons for undertaking project)	To develop Production ERP integrated with busy software
Scope (i.e. the types of persons, services or issues to which the data development activity relates)	Scope of the project is to serve management an excellent tool for electronic data collection, with complete control over each & every transaction that takes place & to facilitate with various kinds of MIS reports which can help management to take better decisions.
Estimated Time of Project	90 days to release the beta version, Completion of the project depends upon the further feedbacks & satisfaction.
Results expected on the project	Bring transparency in work culture of the Organization

Technology Environment

Hardware / Software Interface

The following are the hardware Interface requirements for the project:

For Server:

Processor	--	Xeon Processor
RAM	--	2 GB {Minimum}
Hard Disk Space	--	250 GB or above -15GB of free hard disk space on C drive.
Backup Device	--	DVD Writer
Operating System	--	Windows Server 2003 or above
Database	--	Ms Sql Server 2005 or above

For Client:

Processor	--	Pentium IV or above
RAM	--	2 GB (Min. 512 Mb)
Hard Disk Space	--	160 GB or above 5 GB of free hard disk space
Operating System	--	Windows XP Professional
Anti Virus	--	Standard Anti Virus Software
Monitor	--	SVGA monitor with 256 colors and 1024 x 768 mega pixels resolution

WORK FLOW

The Main Module of the Projects is

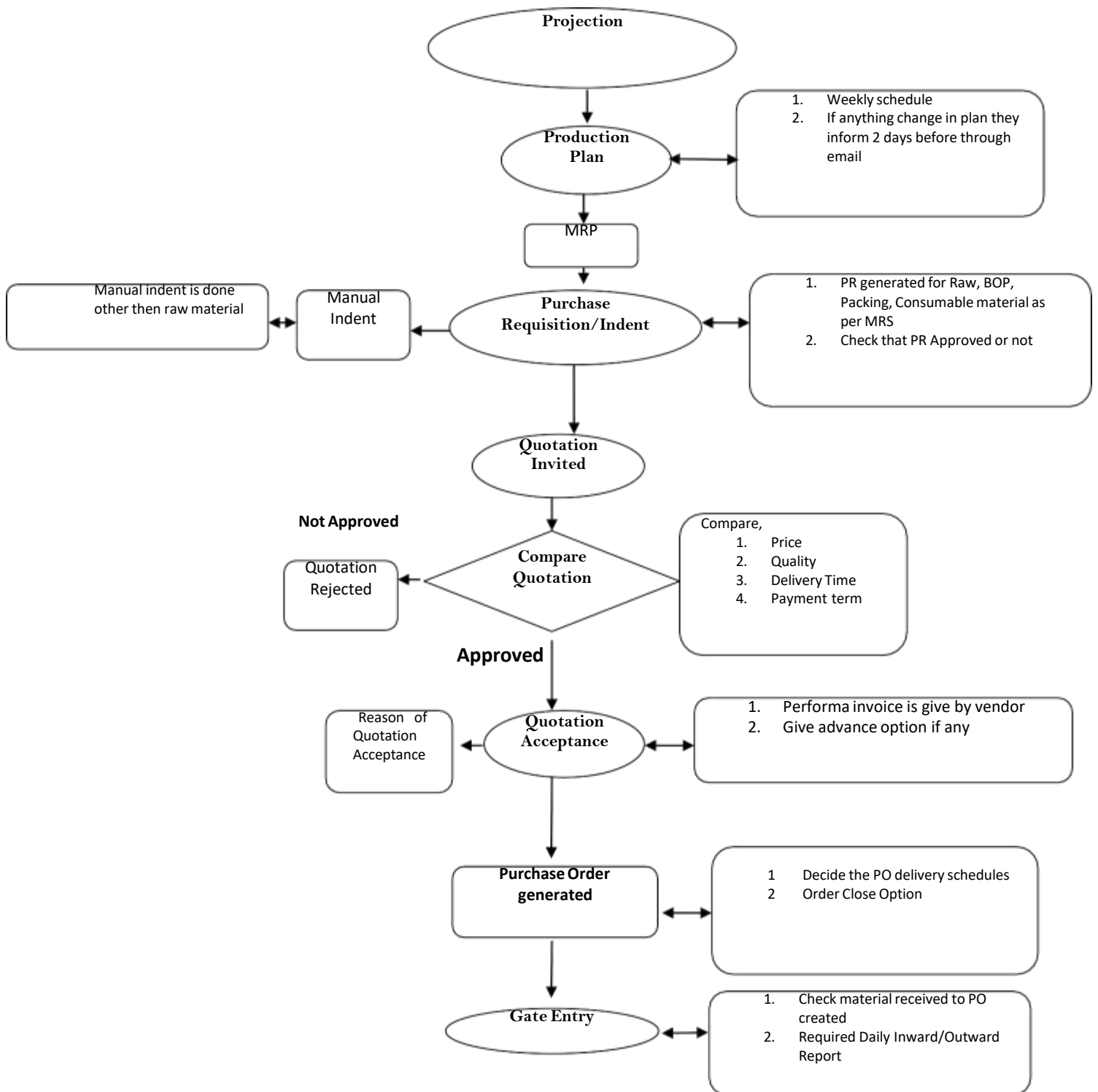
1. PURCHASE
2. PRODUCTION
3. DISPATCH MODULE
4. MIS REPORTS

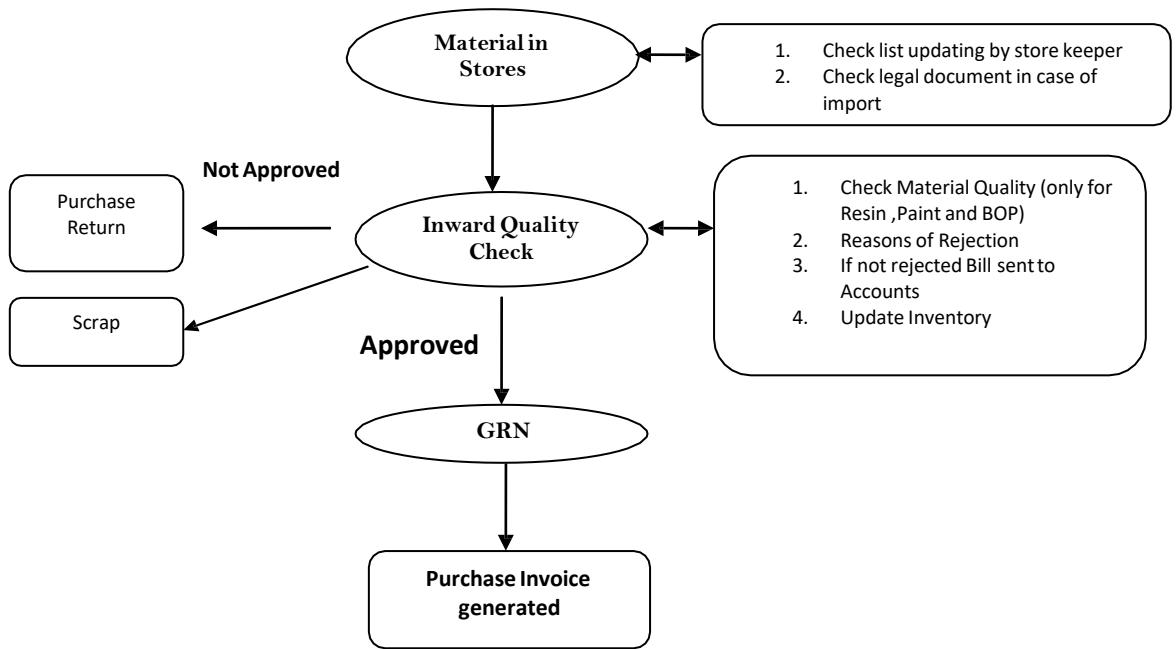
1. Purchase module

Purchase module mainly contain seven Module

- MRP(Material Requisition Planning)
- Quotation
- PR(Purchase Requisition)
- PO(Purchase Order)
- MRN(Material Receipt Note)
- QC(Quality Control)
- Purchase Invoice

Purchase Cycle





2. Production module

The product line has five major categories

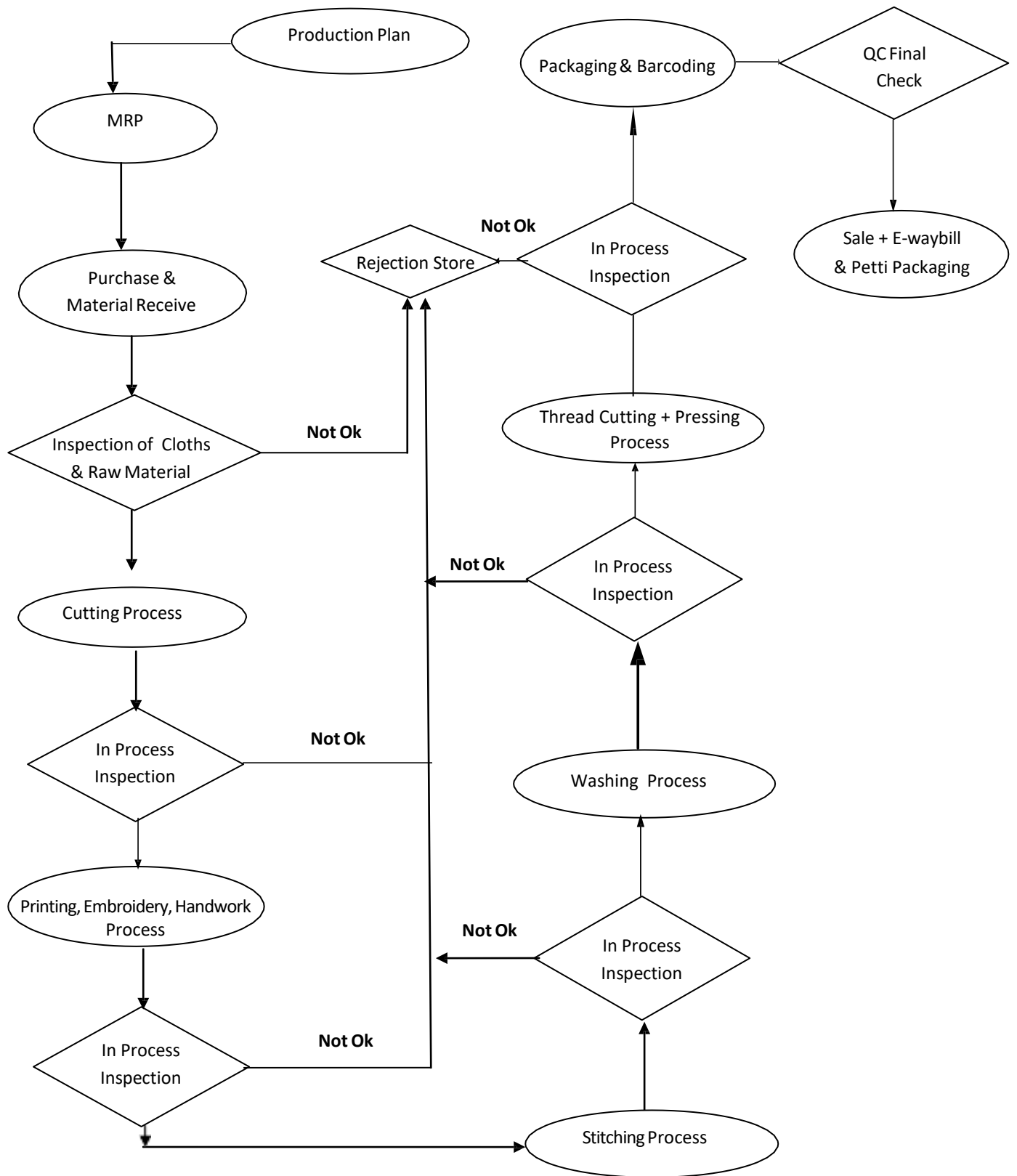
- **PANT**
- T-SHIRT
- COAT SUIT
- TOP
- JACKET

Every item under these category will contain separate BOM(Bill of Material) and can define separate routing process.

Production module mainly contain four Module

- Production Planning
- Raw Material Requisition
- Production Process(Routing Process)
 - I. Process 1
 - II. Process 2
 - ..
 - ..
 - Process N
- Production Confirmation

(i). PRODUCTION PLANNING FOR PANT

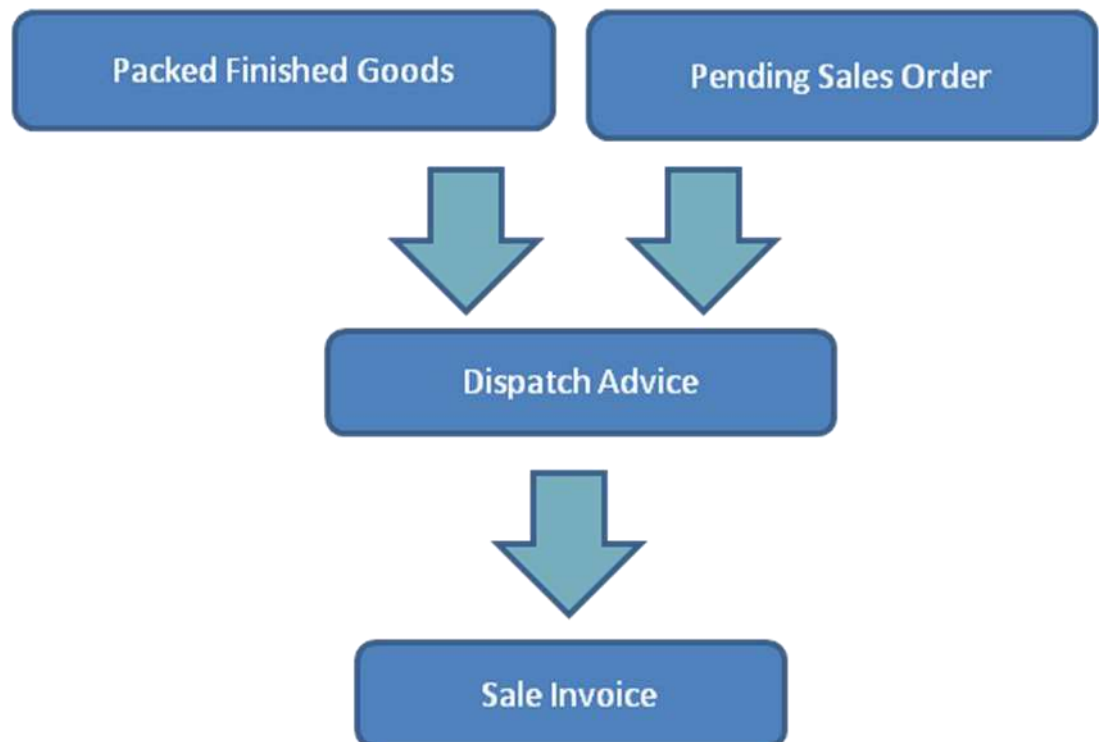


3. Dispatch Module

Sales module mainly contain two Module

- Dispatch Advise
- Sales invoice

Dispatch Module



4. MIS Reports

- Stock Status (Date Wise)
- Production Costing Report
- Production Vs Consumption Analysis
- BOM Variance
- Weight Variance
- Operator Wise Machine Efficiency
- Shift-Incharge Wise Machine Efficiency
- Mould Wise Machine Efficiency
- Rejection Analysis
- Down-Time Analysis
- Delivery Date Variation
- Inventory Ageing Analysis
- Employee Collection Target Achievement
- Employee Target Vs Cost
- Distributor Sales Report
- Employee Sales Report
- Voucher Variation Report
- Ageing Analysis Report
- Production Target Vs Achievement